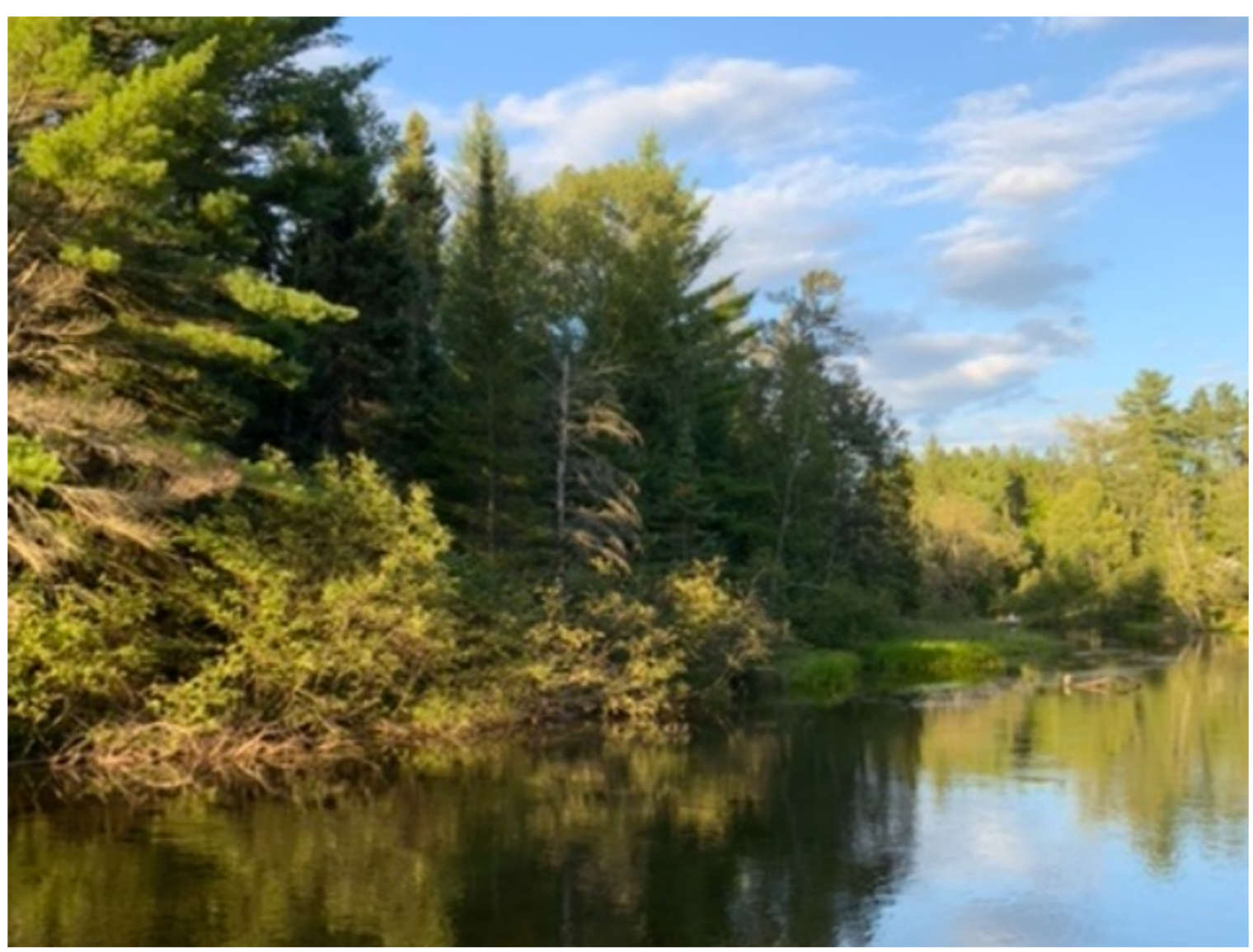




# THE RIVER GUARDIAN SUMMER 2020

**ARPOA BOARD:** David Smith, President; Carol Vidrio, Treasurer; Judy Walle, Secretary & Newsletter Editor; Julie Gibbs, Web Director; Howard Johnson, Cedars for the Au Sable; Boyd Dillon, Steve Poulos, Chairman River Guardians, David Long, Margot Surrige, Micki Levin.



## From the President David Smith

I hope this finds all of you well.

It's not often, in these strange times, there is good news to share but I have some. In this special River Guardian, you will find an excellent article about the Grayling Fish Hatchery.

Just a few years ago, the Au Sable Mainstream was endangered because of a commercial fish farm at the site of the historic Grayling Fish hatchery. The facility was permitted to have 300,000 pounds of rainbow trout and to release tons of fish waste into the Au Sable East Branch barely half a mile from the Mainstream. Scientists felt this pollution might have dire effects on the river downstream. Fast forward a bit and hundreds of thousands of dollars later, the Grayling Hatchery is no longer a fish farm. Read about the exciting things happening there now in the included article.

Stay safe and, as always, I hope to see you on the river.

David



## Meet Julianne Grenn!

She's the first Anglers of the Au Sable Summer Research Fellow and she's helping to breathe new life into the **Grayling Fish Hatchery** through education and outreach.

Learn more of it's history and it's future as a hub of learning and discovery for all ages. Click below!

## Grayling Hatchery Update for Summer 2020

## Help us in the fight against Purple Loosestrife!

### Here's how to remove it safely and effectively:

1. Wait until August to start. The flowers should be in full bloom making the plant easy to see.
2. Gather supplies consisting of trash bags and garden clippers.
3. Land your boat safely and bring a trash bag to the plant. Avoid any dangerous or uncomfortable areas.
4. Identify the plant looking for smooth edged leaves and square stems.
5. Gently cut the flower into the bag so no seeds escape.
6. Cut the plant off as near the ground as possible and put the pieces in your bag. Avoid letting any stem pieces escape as they can start new plants. Look for non-flowering plants nearby and cut those as well.
7. Dispose of the bags in a landfill or burn the plant pieces in your campfire pit.
8. Enjoy a picnic meal.
9. Send pictures of your efforts to [arpoa.mi@gmail.com](mailto:arpoa.mi@gmail.com)



photo by ARPOA member John Blakemore  
Purple Loosestrife— invasive



Blue Vervain— native

## DO YOU SHOP ON AMAZON?

If you do, here is a great way to donate to the Au Sable River Property Owners Association. Just log on to <http://smile.amazon.com> and choose us. Amazon automatically donates 0.5% of the purchase of eligible products to our organization.

## ARPOA website

Looking for copies of old newsletters or more information on the Au Sable River Property Owners Association? Visit our website at [www.arpoa-mi.org](http://www.arpoa-mi.org) or join us on our Facebook page at <https://www.facebook.com/A.R.P.O.A.MI/>.

